

Ye —
ARLINGTON
FORT WORTH INN
TEXAS

2814-469

02466 46 05

5C

6T

3803

.74

Y5

1892

ARLINGTON

FORT WORTH
TEXAS

The Arlington Inn,

Fort Worth, Texas.

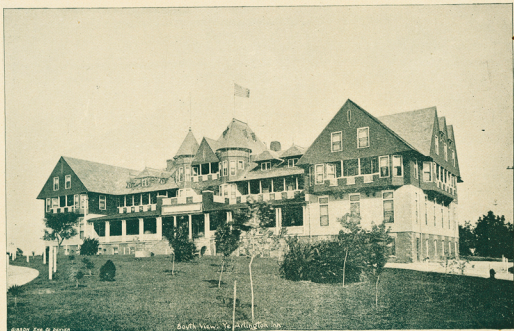
HALF TONE
ENGRAVINGS BY
THE GIBSON ENGRAVING CO.,
DENVER.

PRESS OF
THE APP-STOTT PRINTING CO.,
DENVER.

McLean & Mudge,

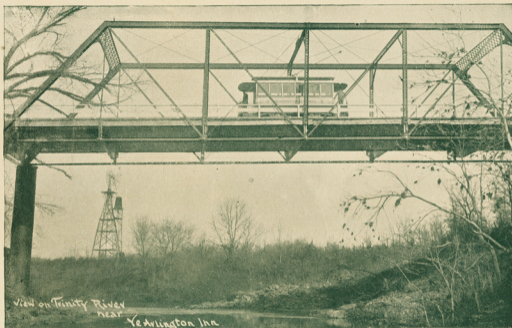
LESSEES AND MANAGERS



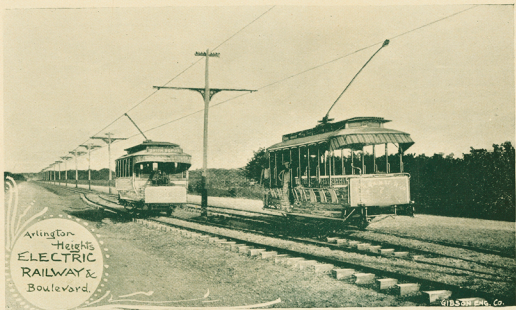


© 1904 Geo. W. Hillman

South View, The Arlington Inn

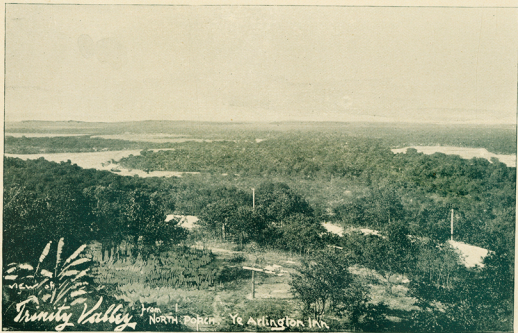


View on Trinity River
near
Yadlington Ia.



Arlington
Heights
ELECTRIC
RAILWAY &
Boulevard.

GIBSON Elec. Co.





G. B. Smith & Co.

TROPICAL BED
A PARK
V. & A. Arlington
INN.



YE ARLINGTON INN
from
VALLEY PARK

Fort Worth



It is the proud distinction of Fort Worth that in 1849 it was chosen as a United States Army Post on account of its eligible site; that it began its existence as a town in 1872 without a single railroad; and that in 1892 it has acquired eight trunk railway lines, with various feeders, and is today one of the largest railway centres on American soil. More people get off and on the cars at Fort Worth than at any other place in Texas. Texas is so great in territory that it combines both the temperate and semi-tropical climates within its borders. For years the traveling public justly complained of the lack of first-class hotel accommodations at Fort Worth. But things have changed. The Fort Worth and Arlington

**A RAILWAY
CENTRE.**

Heights Land and Investment Company saw the city's need and responded by erecting upon Arlington Heights the beautiful tavern christened "Ye Arlington Inn." The structure was formally opened to a grateful public July 9th, 1892, by the Fort Worth and Arlington Heights Hotel Company. The lessees, Messrs. McLean & Mudge, late of Colorado Springs, took charge. The comfort, convenience and entertainment of all guests are in experienced hands. People from the colder regions of the North have now a new winter resort, and health seekers and tourists crossing the continent on the South will discover another attraction at Fort Worth. The commercial man has found a home.

**HOTEL
ACCOMMODATIONS**

**WINTER AND
SUMMER RESORT**



East View, Ye Arlington Inn



ORD painting cannot adequately convey an intelligent idea of the charming location of this modern inn. It stands upon a bold, wooded promontory, jutting out into the valley of the Trinity, eight hundred feet above the level of the sea and one hundred and fifty feet higher than the city of Fort Worth. It is surrounded by forest, park and

**CHARMING
LOCATION**

rolling sward. From its roomy piazzas and broad windows a splendid panorama is unfolded of the grand valley of the Trinity river, the city of Fort Worth and the undulating grounds of Arlington Heights, with the fine, broad boulevard leading thereto. Its commanding elevation insures the cool winds of summer, and the

ELEVATION

balmy, invigorating breezes of winter, which alike attract the Southern tourist and the Northern invalid. All this is the fulfillment of a well-laid plan made three years ago. The stranger to Texas will ask about the climate and temperature. Skip this paragraph if you are not interested in health matters. The mean temperatures at Fort Worth are as follows:

January, 47	July, 80	
February, 50	August, 82	TEMPERATURE
March, 59	September, 75	
April, 64	October, 67	
May, 70	November, 53	
June, 79	December, 47	
Annual,	61.01	

This is a good average.



Gibson Eng & Sons

Flower Bed
in Park
YEARLINGTON
→ INN ←

THE rainfall is as follows :

January, - - - -	2.07	July, - - - -	3.01
February, - - - -	3.68	August, - - - -	2.10
March, - - - -	3.31	September, - - - -	3.00
April, - - - -	4.15	October, - - - -	3.10
May, - - - -	6.26	November, - - - -	4.20
June, - - - -	3.68	December, - - - -	1.58
Annual, - - - -	40.14		

RAINFALL

The first frost appears in the vicinity of Fort Worth the latter part of October, and the last frost usually occurs about the middle of March. The weather is clear, or fair, during three hundred and ten days of the year, leaving but fifty-five possibly bad-weather days. The prevailing wind is from the south, tempered by the nearness of the Gulf. North-westerly winds occur occasionally during the months of December,

THE WEATHER

January and February. The southerly winds average six miles an hour and attain their maximum shortly after sundown. Some reader may have heard of the prevalence of "Northers" and look upon them as objectionable. The region of Fort Worth is very rarely visited by them and, stripped of the provincial term, they are in reality what a northern man would call a rather bad rain and wind storm, which is hailed in this warmer climate as a health-giving tonic. The climate is admirably adapted to persons suffering from throat, bronchial and lung troubles. The low altitude, dry atmosphere and complete immunity from all malarial troubles are special factors in the cure of pulmonary diseases. An epidemic of scarlet fever has never been known to exist in Fort Worth or vicinity. Imported cases of diphtheria

**RESORT FOR
INVALIDS**



are not contagious. The few cases of typhoid fever and pneumonia known here were modified by the climate and rendered much milder than the same disease in other states. The death rate does not exceed eleven per thousand. The health question is thus satisfactorily disposed of. On arrival in the Union

Depot at Fort Worth, a responsible employe of the hotel is found at the waiting-room belonging to Ye Arlington Inn. It is the duty of this representative to receive the baggage checks of all visitors and attend to the prompt delivery of all trunks and satchels. An electric car of the Arlington Heights Street Railway Company is found in waiting from 6:30 a.m. until midnight, to convey the visitors in twenty minutes to the hotel for a single car-fare of five cents. Sample rooms for the use of commercial travelers are located on

ON ARRIVAL

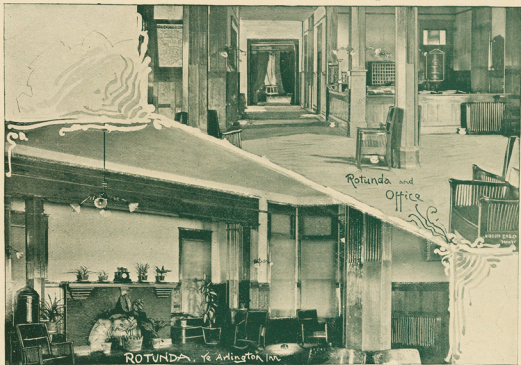
Seventh street, between Main and Houston streets, within half a block of the postoffice, and are controlled by the hotel company. Commercial travelers may surrender the checks of their sample trunks to the hotel porter at the Union Depot, and, without inconvenience, have them delivered at the sample room, placed under lock and key and ready for use without delay. Telephone connection is had between the Union Depot waiting-room and the hotel, as well as the city central office. The exterior of Ye Arlington

Inn presents a pleasing semi-colonial design, four stories high, constructed from a combination of fine pressed red brick, Pecos red sandstone and securely plated natural woods. The structure is

symmetrical, imposing and perfect to the smallest detail. It is provided with numerous broad verandas and private balconies. Great care was taken in securing abundant ventilation. Every opening is supplied with wire screens. The frontage of the building is to the South-east, securing to every guest-room this much desired exposure.

SAMPLE ROOMS

EXTERIOR



Rotunda and
Office

ROTUNDA, Ye Arlington Inn

THE architects were Messrs. Messer, Sanguinet & Messer; the contractor, A. E. Newell; the stone and brick work was done by William Bryce: all of Fort Worth, and to all of whom much praise is due. A description of the interior is best accomplished by beginning with the rotunda.

This charming lounging room is reached through a vestibule entrance from the broad and sheltering veranda, and is one of the enjoyable features of the building. Opening into it upon the left is the cosy reception room with its cheerful fireplace and inviting furniture. Opposite and across the hall, facing the visitor upon his entrance, is a mammoth fire-place, worthy of New England's famous hostelries. From opposite sides of the office, wide, high and softly carpeted hallways lead to the parlor and ball-rooms. The liberal dimen-

THE ROTUNDA

DRAWING ROOM

sions, good ventilation and exquisite furnishings of the Drawing Room at once impress even the casual visitor. The hardwood floors and massive rugs are covered with the finest furniture.

The spacious windows are partially obscured by rich hangings, while at the northern end a Louis XVI mantel with its ancient brass trappings adds a comfortable appearance to the entire interior. An elegant piano from the Charles W. Stieff Manufacturing Company, of Baltimore, Md., and Fort Worth and Houston, Texas, and fine etchings, water and oil color paintings complete the pleasing picture. Ladies upon their arrival at the Inn are immediately made to feel at home by their introduction to the

LADIES RECEPTION ROOM

dainty Ladies Reception Room. The decorations are fittingly quiet and beautiful. The Grand Dining Hall is thirty-five by seventy-five feet inside, has a polished hardwood floor and is wainscoted in the same style as the hall leading from the rotunda to the parlor. The lofty ceiling in



this room is laid out with ornamental panels, exposing the grained ribs in an unique fashion. Suitable molding

DINING HALL

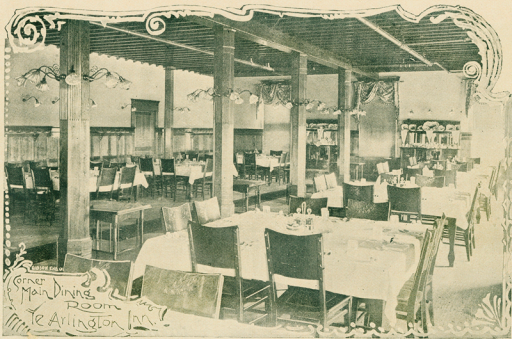
sets off the panels. The walls are finished in rich, quiet colors. The furniture is natural quarter-sawed oak, upholstered in leather. From the west windows of this magnificent room is obtained a view across the wide valley of the Trinity, which is as gratifying a feast to the eye as the dining room cuisine is to the inner man. Fully one hundred electric lights, of sixteen candle power each, are placed just above the wainscoting. Adjoining the large dining room are situated two smaller rooms held for the exclusive use of parties where special meals are served at any time, and the luxuries of a banquet may be indulged in. A private dining room is provided for the use of children and nurses. The tableware received due

TABLEWARE

consideration in the selection of cut glass, china and silverware, the latter being furnished by Messrs. J. E. Mitchell & Co., the Fort Worth jewelers. The china for the entire building was supplied by the Fort Worth China Company. This china is Royal Worcester, Haviland, Copeland and Royal Harvard. On the north side of the building, at the back of the dining room, is the kitchen. It has liberal dimensions, ample light, and perfect ventilation and sanitary drainage. The floor and walls are faced with the finest Parian cement, and everything is suggestive of the best appointments that experience could suggest.

THE CHEF

The ranges and kitchen utensils were purchased from Messrs. Lewis Bros., Fort Worth. This department is presided over by a chef from the Palace Hotel of San Francisco, and able assistants from other well known hotels. Especial care was observed in providing the inn with ample and suitable storage facilities. Separate departments are devoted to the storage of meats, dairy products and groceries. The pantries are roomy, convenient and clean.



Corner
Main Dining
Room
The Arlington Inn.

THE Billiard Room, with deep French windows, is on the ground floor, opening upon the lawns. It is provided with carom and pool tables from the factory of the Brunswick-Balke Billiard Table Co. The guest rooms are single and en suite: the latter comprising a parlor, bed room and bath room.

BILLIARD ROOM

If desired, a series of rooms and suites may be thrown into one large apartment for the accommodation of families or any number of persons. The apartments are furnished in a rich and elegant manner. All are handsomely carpeted and supplied with the best of beds and bedding. The linens are of the finest texture and weave. All of the upper chambers, with but two exceptions, have access to

**CARPETS AND
FURNITURE**

private galleries. The carpets, hangings and linens were provided by Messrs. G. Y. Smith & Co., Fort Worth. The furniture for the entire building was furnished by Messrs Maddox, Ellison & Co., Fort Worth. An elevator from the factory of the Crane Elevator Co., affords quick service from the dining room to the fourth floor. Sanitary arrangements are as perfect as scientific research and skill can produce. The plumbing provides local ventilation throughout the building, in which the bath rooms have received special attention. The plumbing and steam fitting were provided by Messrs. Ackley & Osborne, Fort Worth. The building is heated by steam generated on the premises. Two

STEAM HEATING

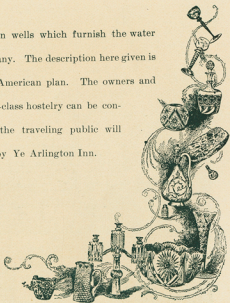
Haxton boilers, with heating capacity of two thousand square feet each, are used for this purpose. The entire building and extensive park surrounding it are brilliantly illuminated by electricity supplied from the company's plant.

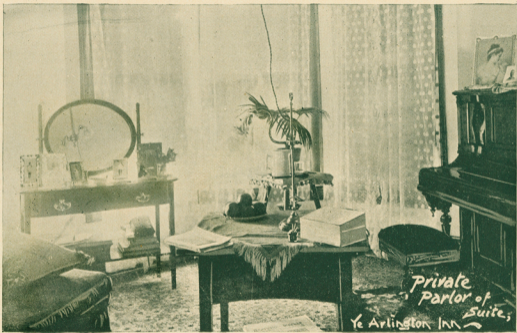


Billiard Room, Le Arlington Inn

CLAYTON BROS. CO. DENVER

PURE water in abundance is received directly from the artesian wells which furnish the water for the water system of the Arlington Heights Water Company. The description here given is incomplete without mention of the service, which is on the American plan. The owners and managers of the hotel intend to demonstrate that a thoroughly first-class hostelry can be conducted in Texas, and at reasonable rates. It is believed that the traveling public will readily take advantage of the extraordinary accommodations afforded by Ye Arlington Inn.





Private
Parlor of
Suite,
Ye Arlington Inn

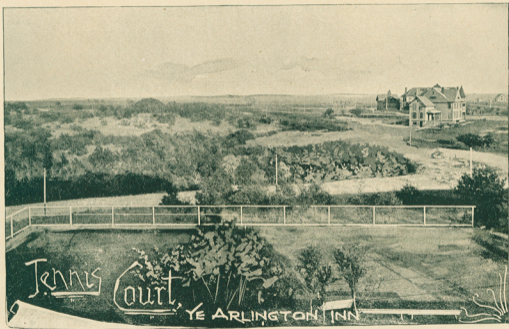


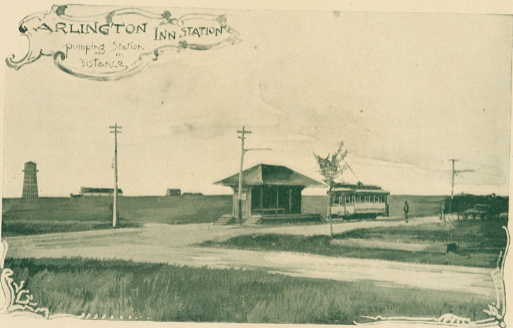
North view, The Arlington Inn

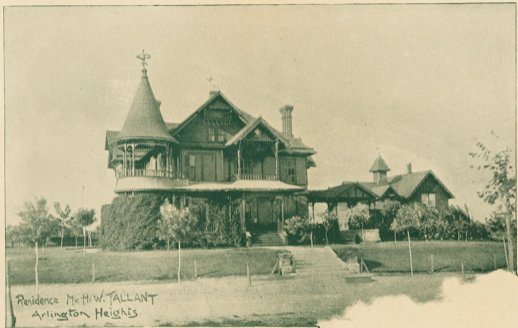


© 1908 AM. CO. NEW YORK

Flower Bed in Park, Ye Arlington Inn

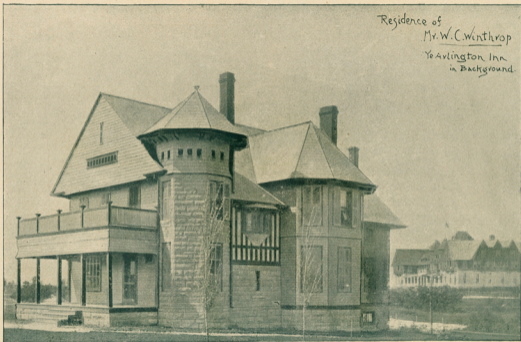






Residence Mr. H. W. TALLANT
Arlington Heights

Residence of
Mr. W. C. Winthrop
Ye Arlington Inn
in Background.



WHY NOT
TAKE A
WINTER TRIP
... TO TEXAS
AND GET WARM.



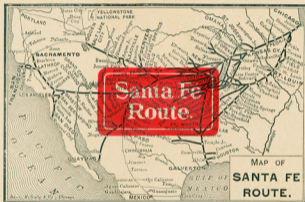
The Original Tourist Sleepers.

GOING TO **Fort Worth**

TAKE **SANTA FÉ ROUTE**

(A. T. & S. F. R. R. - G. C. & S. F. R. R.)

SHORTEST, QUICKEST
and BEST.



Scenery Near Ft. Worth.



For Information About
FARMS IN TEXAS
Apply to H. G. THOMPSON, G. P. & T. A.,
P. O. & S. F. R. Y., GALVESTON, TEXAS.

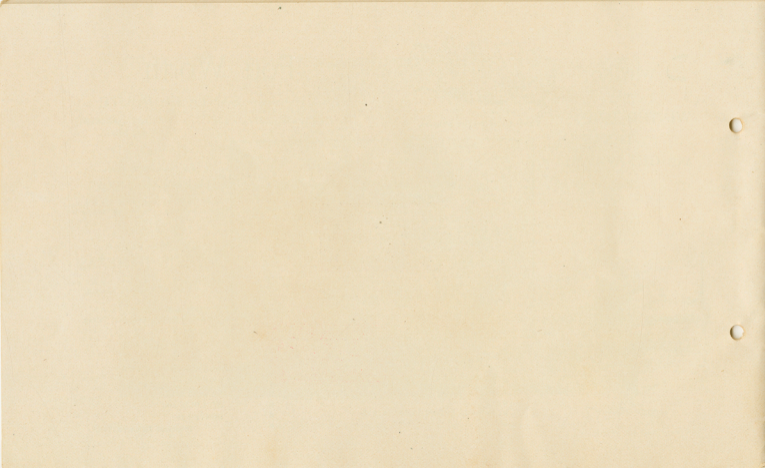


For Information About
TICKETS TO TEXAS
Address: G. T. NICHOLSON, G. P. & T. A.,
A. T. & S. F. R. Y., TOPEKA, KANSAS.
OR
H. G. THOMPSON, G. P. & T. A.,
G. S. & S. F. R. Y., GALVESTON, TEXAS.



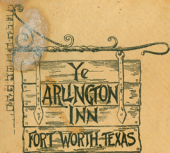
- This Map will show you where the SANTA FÉ
- runs.
- Nearly 10,000 miles of track makes it the Largest
- Railroad System in the World.

PULLMAN PALACE SLEEPERS
CHICAGO,
KANSAS CITY,
ST. LOUIS and
DENVER to
Principal TEXAS CITIES.









Mr. Geo. Boddie,
Lafayette,
Christian Co.,
Ky.

